

**The Alabama-West
Florida United
Methodist Foundation
(ALWFUMF)**

Our mission is to encourage generosity as a way of life, foster planned giving, develop successful planned giving programs, and manage funds in order to strengthen the work of Christ's church. Our AWF Development Fund also supports church growth by providing loan services for building, renovating, or purchasing property.

Our purpose is to help individuals and the church by encouraging generosity through education, consulting, development, and financial services.

Services

Foundation Services:

- Generosity Development/ Workshops and Events
- Consulting
- Fund Administration
- Investment Services
- Church Planned Giving Programs
- Digital and Printable Resources
- Marketing Resources
- Quarterly Newsletters
- Monthly Eblasts

**AWF Development Fund
Services:**

- Loans (3.95% rate)
- Deposit Accounts for Individuals and Churches (0.40% rate)

UNITED METHODIST
**DEVELOPMENT
FUND**

ALABAMA • WEST FLORIDA

Generosity Matters

"Giving, not getting, is the way. Generosity begets generosity." Luke 6:38 (MSG)

A PUBLICATION OF THE ALABAMA-WEST FLORIDA
UNITED METHODIST FOUNDATION | WINTER 2022

Bequest Revitalizes Maplesville UMC



Present Maplesville UMC location with fresh paint and new shutters on Railroad Street (photo by Karen Ford)

Maplesville UMC is a beautiful small town church initially constructed in the 1870s on the main road that runs through Maplesville, Alabama. The city of Maplesville was frequently used as a campground by farmers on their way to sell their goods to stores in Selma, Alabama. Maplesville UMC was the first church built in town and was originally shared with several other religious groups and served as a school from time to time.



Interior of Maplesville UMC

In 1888, Maplesville UMC was dismantled and moved to its present location facing the city's railroad on Railroad Street, and the original plot of land is where the Maplesville Cemetery is today. Moving the church allowed train passengers to see that the small town had a church. The sound of the train rolling through often frightened the early church members' horses as it passed, and to this day, the train can be heard rolling through on Sunday mornings in the middle of the pastor's sermon.



Maplesville UMC's Walking Garden

In 1993, Maplesville UMC was placed on the Register of Historic Structures, and a historic marker was installed for its one-room Gothic Revival-style church building, an architectural style once built throughout the South.

Much has been done over the years to preserve the church, but **it was not until a bequeath from third-generation descendants of the Foshee Family that the church was able to repair some of the building's structural issues** and

Continued on page 4

Winter 2022 Newsletter | 1

OUR BOARD OF DIRECTORS

Terri Turner**

Executive Director of Foundation
foundation@alwfumf.org • 334-793-6820

Russell S. Dunman**

President of Foundation Board

Henry Hooks**

President of Development Fund Board

Stephen Burch

Vice President of Foundation Board

David Graves

AWF Conference Bishop

Debora Bishop

Baypines & Mobile District Superintendent

Mike Pearson

Demopolis and Montgomery-Prattville
District Superintendent

Jean Tippit

Marianna-Panama City and Pensacola District
Superintendent

Jeff Wilson**

Dothan and Montgomery-Opelika District
Superintendent

Dennis Adams

Jon Heath

Howard Adams*

Bill Hill

Ben Barron*

Hope Johnson*

Chris Beam

Olen Kirby

Tommy Boyd

Suzanne Krejcar*

John Bullard Jr.

Laureen Lynn

Eric Canada

Beverly Maddox**

Clay Carnathan*

Tony Mallini

Shannon Carr Chancey

Joseph
McCorquodale

Ross Cotter

Howard Meadows

Mark Davidson

Jeff Outlaw

Ashley Davis*

Bryan Poole

Jana Ealum

Ed Reifenberg

Gene Floore

Lany Simmons

Beebe Frederick

Mike Tucker

*AWF Development Fund Board of Directors

**AWF UM Foundation and Development
Fund Board of Directors

*If you are interested in partnering
with the Foundation by joining our
Board of Directors, please contact
Executive Director Terri Turner at
foundation@alwfumf.org.*



Ministries to Churches & Individuals

Regardless of any changes that may occur, **we want to reassure you that our Foundation, a 501c3 organization, is positioned to continue providing services to both Methodist and historically Methodist churches, institutions, and individuals** as we have done since 1979. There will not be any significant changes in our services, and your investments will remain secure. When establishing planned gifts to benefit churches and ministries, options are also available to set up contingencies and secondary beneficiaries.



Investments

Our investment services are **uniquely created for managing church and agency funds.** The Foundation staff assists in developing a custom investment plan for each participating organization or donor.



Fund Administration

We provide trust fund accounting, regular disbursements, and all other fiduciary administration services and report this information to you on easy to read statements.



Free Resources

We offer free resources such as newsletters, handouts, bulletin inserts, social media posts, holiday resources, news, events, and stories on churches through our email list and social media accounts. Like us on Facebook at facebook.com/alwfumf, follow us on Instagram and Twitter at @ALWFUMF, and ask to be added to our email list at foundation@alwfumf.org.



Planned Giving Programs

Planned Giving Programs help **encourage and facilitate planned gifts and endowments to the church.** We teach church leaders how to establish and cultivate permanent and reserve sources of income to support and sustain church ministry programs while also offering a step-by-step guide designed to encourage and support future financial needs of the church.

Continued on page 3



Educational Events and Webinars

We offer generosity and financial development through educational programs, workshops, and events that foster a better understanding of giving and stewardship as both an act of worship and discipleship. Visit www.alwfumf.org/events to learn more.



Legacy Gifts Consulting

We offer **one on one meetings with individuals who are looking to do something generous for their church.** We provide a variety of legacy and planned giving options and can help you plan and set up these gifts to accomplish your specific goals for leaving a legacy in your church.



Development Fund Loans

The AWF Development Fund provides loan opportunities to churches with attractive rates and helps churches walk through the application process and answer committee questions. The Fund makes **low-interest loans for up to \$1 million*** to churches and agencies in the AWF Conference **for new church construction, purchasing property, and large renovation projects.** These loans have competitive interest rates, loan terms up to 15 years, do not charge points or closing costs, and interest earned from loans goes back to AWF Conference members and investors.

*For loans larger than \$1 million, contact us! The Foundation has the ability to negotiate with other Foundations for larger loans.



Scholarships

Scholarships are available from numerous sources for both Ministerial and Lay students. The Foundation's Scholarship Committee (unless otherwise designated by the donor) determines which applicants meet the criteria for available scholarships.



Development Fund Investing

The Development Fund accepts investments from individuals, churches, and organizations across the AWF Conference. **The Fund pays investors a rate of interest set each quarter and makes loans to churches, agencies, and missions in the conference.** Interest is paid quarterly and is earned from the day of the deposit to the day of the withdrawal. You may withdraw all or part of your investment with a written/signed request at any time. There is no penalty, fee, or loss of interest when withdrawing funds. Interest can also be reinvested each year.

*Investments are not FDIC insured. Investments are secured by the assets of the Fund and the first mortgages of the churches. No investor in the Fund has ever lost any part of their investment or interest earned.

To learn more about our ministries to churches and individuals, contact Terri Turner at foundation@alwfumf.org, call 334-793-6820, or visit www.alwfumf.org.

Accepting Ministerial and Lay Scholarship Applications



APPLY FOR A
SCHOLARSHIP

Did you know ministerial scholarships* are available through the Foundation?

*Some lay scholarships are available for undergraduate students. Check with your local church to see if they have a scholarship fund with the Foundation to benefit their student members.

The Foundation is proud to administer scholarships established by United Methodist donors for the benefit of United Methodist students.

Be sure to let students in your congregation know about this opportunity and have them fill out our application before the **June 30, 2022 deadline** to see if they qualify.



To learn more and download the application visit www.alwfumf.org/individuals/scholarships or contact us at foundation@alwfumf.org.

In This Issue:

Bequest Revitalizes
Maplesville UMC

Foundation Ministries to
Churches and Individuals

Accepting Ministerial and
Lay Scholarship Applications

Read on the Go!

Sign up for the digital
newsletter by emailing
foundation@alwfumf.org
or scan the QR code with a
smartphone camera.



f i t @ALWFUMF

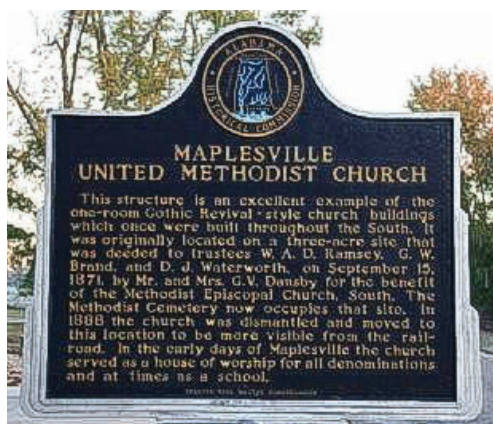


PRSTD STD
U.S. POSTAGE
PAID
PERMIT 77
DOTHAN, AL
36302

Alabama-West Florida United Methodist Foundation

P.O. Box 8066 | Dothan, Alabama 36304
Phone: 334-793-6820 | Fax: 334-794-6480
www.alwfumf.org | foundation@alwfumf.org

Bequest Revitalizes Maplesville UMC *(continued from page 1)*



Historical marker at Maplesville UMC installed in 1993 (photo By Tim & Renda Carr)

purchase an adjacent lot to enlarge the walking garden area. The Maplesville UMC walking garden adds to the beauty and serenity of the property and is enjoyed by the town's residents at activities throughout the year. More recent improvements to the church include a fresh coat of paint and new shutters just in time for Christmas of 2021.

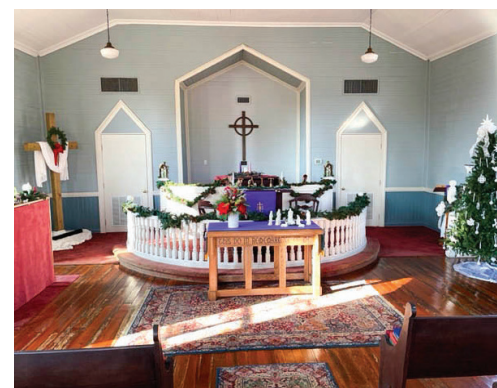
4 | Winter 2022 Newsletter

of paint and new shutters just in time for Christmas of 2021.

Maplesville UMC is not only blessed by the bequest itself, but has experienced church members to manage the investments over the years. In 2021, after learning about the investment services of the Foundation and the benefits of our oversight, diversification, and professional management, **the leaders in the church established a partnership with the Foundation for investment and administrative support of the Foshee Family gift.** The Foundation provides a monthly check to the church from the earnings that will continue as a permanent source of supplemental income. **To financially plan long-term, these types of legacy gifts are vital to churches.** To learn more, call or

email Terri Turner at the Foundation office: 334-793-6820 or foundation@alwfumf.org.

Maplesville UMC is currently served by Rev. Andrew Howell and is attended by a small but very loyal congregation. The legacy of this beautiful, historic church will continue to live under the wise and generous commitment of those who love the church.



Interior of Maplesville UMC